

# UTILITIES HOST OPEN HOUSES IN YOUR AREA

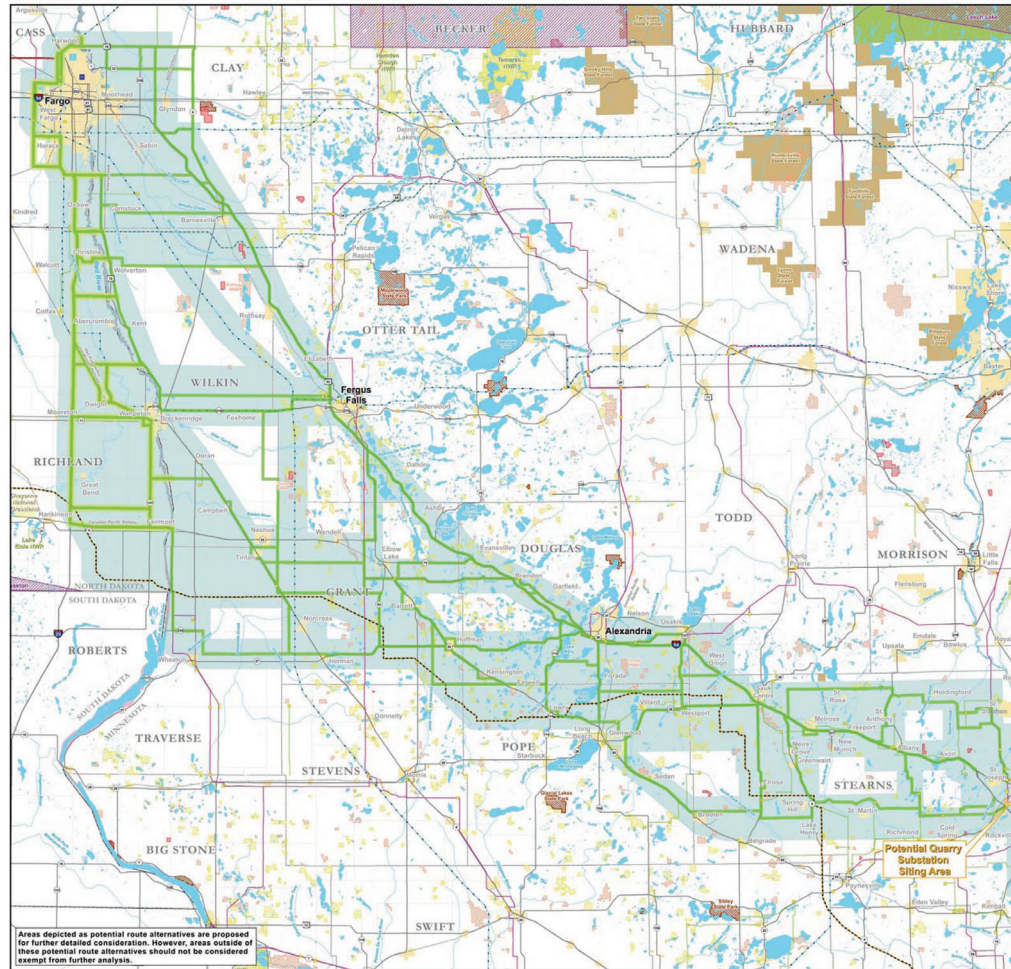
The CapX 2020 utilities are hosting five open houses in your area on the proposed high voltage transmission line between Fargo, Alexandria, St. Cloud and Monticello. The open houses will include maps that display several transmission line route options (1,000 feet wide). Please stop by anytime to provide your comments on the route options. No formal presentation is scheduled.

In order to first target the critical electrical reliability needs in the St. Cloud area, the utilities have divided the line into two – Monticello to St. Cloud and St. Cloud to Fargo. The utilities are moving toward filing a Route Permit for the Monticello to St. Cloud project with the Minnesota Public Utilities Commission in late summer and a Route Permit for St. Cloud to Fargo in late fall.

This line is one of three 345-kilovolt lines proposed by CapX 2020, a joint initiative of 11 transmission-owning utilities in Minnesota and the surrounding region. The initiative is designed to expand the electricity infrastructure to ensure continued reliable service, meet the growth in electricity demand and support renewable energy expansion.

If you are unable to attend the open houses, submit comments by visiting [www.CapX2020.com](http://www.CapX2020.com), calling 866-876-2869 or sending an e-mail to [fargoinfo@CapX2020.com](mailto:fargoinfo@CapX2020.com).

[www.capx2020.com](http://www.capx2020.com)



## Legend

- Airport
  - Substations
  - Potential Route Alternative (\*1,000 foot width)
  - North Dakota Corridor Compatibility Area (1 mile width) & Potential Route Alternative (\*1,000 foot width)
- Power Lines**
- Voltage (kV)
- 400
  - 345
  - 250
  - 230
  - 115
  - 69
- Roads**
- Interstate
  - US Highway
  - State Highway
  - County Road / Secondary Road
  - Railroad
  - River / Stream
  - Lake
  - State Boundary
  - County Boundary
  - Project Corridor
  - Municipalities
- Wild & Scenic Rivers**
- Recreational
  - Scenic
- State Land**
- State Wildlife Management Area
  - State Scientific and Natural Area
  - State Park
  - State Forests
- U.S. Forest Service Land**
- National Forest
  - National Grassland
  - Wilderness Area
- U.S. Fish & Wildlife Service Land**
- National Wildlife Refuge
  - Wilderness Area
  - Waterfowl Production Area
- Other Federal Land**
- National Park Service
  - Department of Defense
  - Tribal Land

# CapX2020

Delivering electricity you can rely on

*Central Minnesota Municipal Power Agency  
Dairyland Power Cooperative  
Great River Energy  
Minnesota Power  
Minnkota Power Cooperative  
Missouri River Energy Services  
Otter Tail Power Company  
Rochester Public Utilities  
Southern Minnesota Municipal Power Agency  
Wisconsin Public Power Inc.  
Xcel Energy*

## OPEN HOUSE SCHEDULE:

### Monday, June 2

3 – 7 p.m.  
American Legion  
265 County Road 173  
Melrose, MN 56352

### Tuesday, June 3

3 – 7 p.m.  
Broadway Ballroom  
115 30th Ave East  
Alexandria, MN 56308

### Wednesday, June 4

11 a.m. – 1 p.m.  
Barrett Community Center  
109 Barrett Ave  
Barrett, MN 56311

### Wednesday, June 4

4 – 7 p.m.  
Best Western Bigwood  
Event Center  
925 Western Ave  
Fergus Falls, MN 56537

### Thursday, June 5

3 – 6 p.m.  
Best Western  
Doublewood Inn  
3333 13th Ave South  
Fargo, ND 58103

For additional information on the regulatory process:

Minnesota Department of Commerce ([www.commerce.state.mn.us](http://www.commerce.state.mn.us))

Minnesota Public Utilities Commission ([www.puc.state.mn.us](http://www.puc.state.mn.us))

North Dakota Public Service Commission ([www.psc.state.nd.us](http://www.psc.state.nd.us))

Contact information for the Fargo–Alexandria–St. Cloud–Monticello project:

866-876-2869 • [fargoinfo@capx2020.com](mailto:fargoinfo@capx2020.com)