

PSCW selects final Wisconsin route for Hampton-Rochester-La Crosse 345 kV line

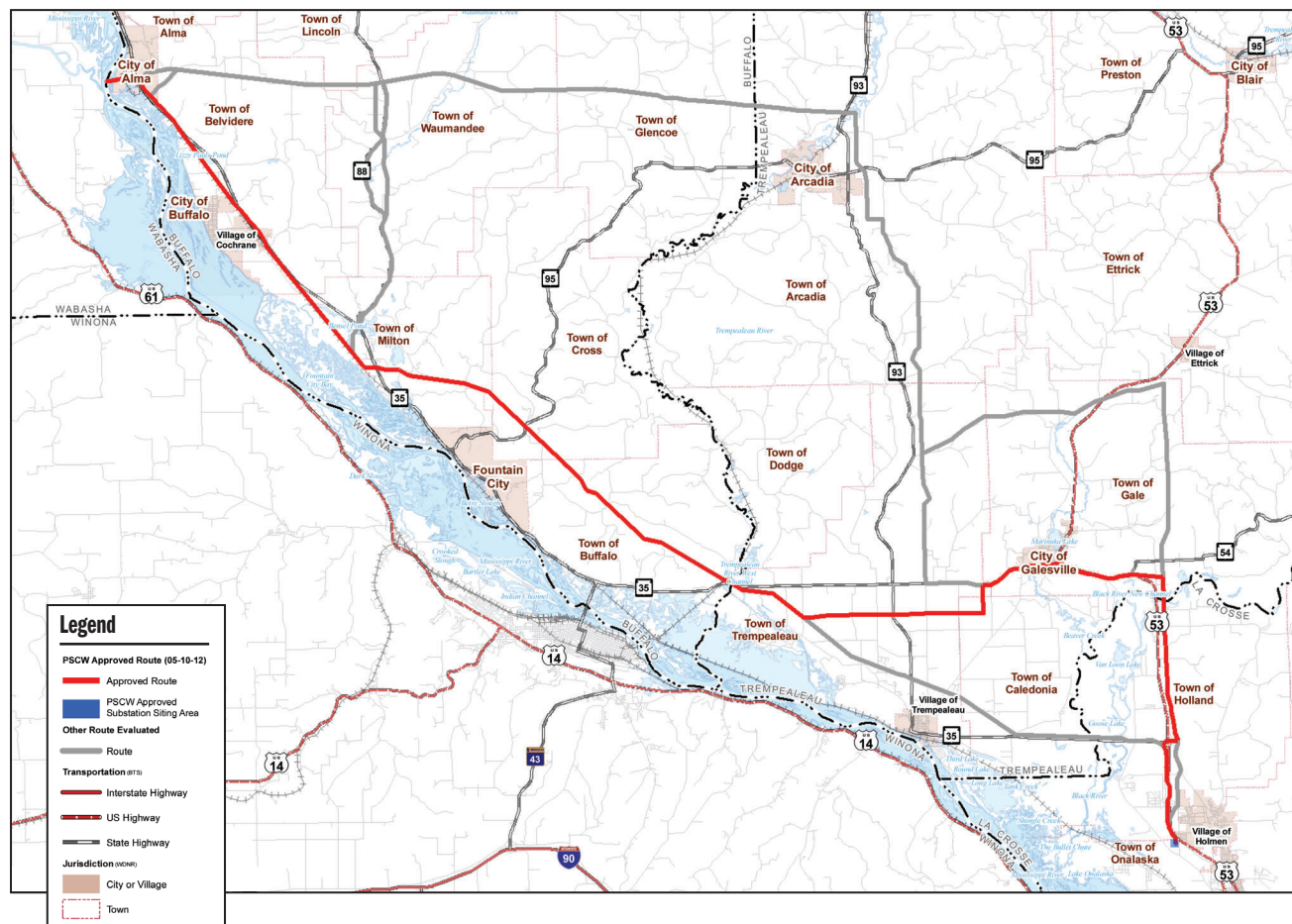
The Wisconsin Public Service Commission approved the Certificate of Convenience and Necessity for the CapX2020 Hampton-Rochester-La Crosse 345 kV line on May 10, 2012. The approved route runs between Alma and a new substation near Holmen. View detailed route maps at www.CapX2020.com/lacrosse.

The PSCW approved the approximate 48-mile modified Q1-Galesville route between Alma and Holmen, Wis. The route follows 32 miles of existing transmission or rail corridors and a five-mile segment along Wisconsin Highway 54/93 near Galesville. In the Holmen area, the route was modified to follow US Highway 53 for three miles to the new Briggs Road substation. In addition, the CapX2020 utilities will remove a nearly 60-year-old, 3.5-mile section of 161 kV line that currently runs through the center of Holmen.

Local governments and municipalities will be compensated for hosting the transmission line. A one-time fee of nearly \$9 million will be paid to counties and municipalities; additionally, 14 local governments will receive annual payments totaling \$540,000. The one-time payments can only be used for parks, conservancy or other environmental-type projects, according to state statute; annual payments can be used for anything.

The red line designates the approved 345 kV route in Wisconsin.

www.capx2020.com



CapX UPDATE

JUNE 2012

CapX2020
PO Box 9437
Minneapolis, MN 55440

Presorted
First-Class Mail
U.S. Postage
PAID
Saint Paul, MN
Permit No. 3302

*Central Minnesota Municipal
Power Agency
Dairyland Power Cooperative
Great River Energy
Minnesota Power
Minnkota Power Cooperative
Missouri River Energy Services
Otter Tail Power Company
Rochester Public Utilities
Southern Minnesota Municipal
Power Agency
WPPI Energy
Xcel Energy*

 @capxprojects



What's next

The federal Environmental Impact Statement, which covers the entire project, was issued in June. Construction is expected to start in Minnesota in early 2013. Most landowners in Wisconsin will not be contacted regarding easement acquisition until mid 2013.

The Hampton-Rochester-La Crosse project is expected to be energized in 2015. The overall project cost is approximately \$500 million.

We want to hear from you.

Contact us at www.CapX2020.com or:
Tom Hillstrom, routing lead, Xcel Energy
Grant Stevenson, project manager, Xcel Energy
PO Box 9437
Minneapolis, MN 55440-9437
1.800.238.7968
lacrosseinfo@capx2020.com